



[Ver. 2024.01.03.]

무대 기술 정보 안내

STAGE TECHNICAL SPECIFICATIONS

아르코예술극장

ARKO Arts Theater

대극장

Main Hall

1. General Information



- **Proscenium Stage**

- Width 14.6m
- Depth 20.47m (The distance from the pit line to the back wall of the back stage)
- Proscenium Height 7.5m
- Main Stage Height 21m
- Back Stage Height 7.6m

※ **You can't adjust the opening of the proscenium.**

- **Total Auditorium seats 600 (Including 6 wheelchair seats)**

- 1st Floor 447
- 2nd Floor 153

Columns 라 A-line 1 to 17 on the 1st floor can be converted in to Wheelchair seats

* It take manpower and time to move and change the location.

- **Stage Manager Desk**

- Location : Stage left **Stage Manger Desk can't change the location**
- Available the wired and wireless intercom, walkie-talkie, paging system
- Monitor (Infrared camera)

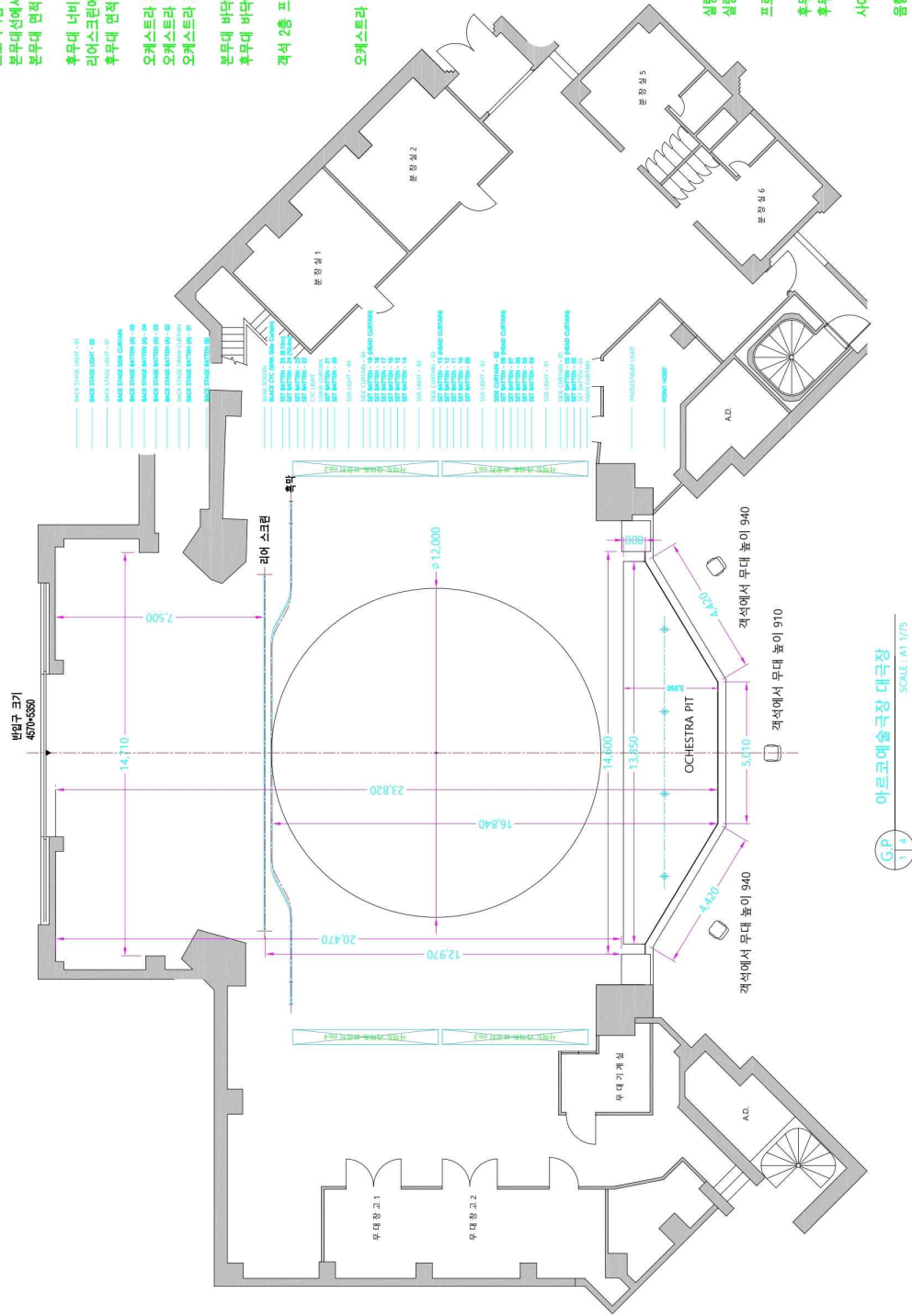
- **All equipment and goods in the theater can be moved after consultation in advance.**



1-2. General Information 2

노트 (NOTES)

- 프로시니엄 너비 14,600, 높이 7,800
- 본무대선에서 리어스크린까지 거리 12,970
- 본무대 면적 14,600*12,970 = 189,440㎡ = 57.3평
- 후무대 너비 14,710
- 리어스크린에서 후무대 뒤 벽까지 7,500
- 후무대 면적 14,710*7,500 = 110,325㎡ = 33.4평
- 오케스트라 피트 면적 38.8㎡ = 10.2평
- 오케스트라 피트 최대 길이 -3,340
- 오케스트라 피트 폭중 3,000kg
- 본무대 바닥에서 그라운드까지 높이 23,400
- 후무대 바닥에서 그라운드까지 높이 9,300
- 객석 2층 프로젝터 선반에서 메인카튼까지 거리 13,030
- 후막까지 거리 23,660
- 후무대 뒤 벽까지 거리 32,070
- 프로시니엄에서 그라운드까지 높이 16,840
- 후무대 뒤 벽까지 거리 23,460
- 오케스트라 피트 앞 선에서 후막까지 거리 16,840
- 후무대 뒤 벽까지 거리 23,460
- 회전무대 하중 5000kg
- 호이스트 길이 8,000
- 호이스트 하중 155kg
- 장처볼 1반-23반 하중 500kg
- 장처볼 24반, 25반 하중 350kg
- 다리막 1반-4반 하중 300kg
- 본무대 조명볼 하중 1,000kg
- 본무대 OTC 조명볼 하중 700kg
- 실림1에서 메인카튼까지 거리 15,660
- 실림2에서 메인카튼까지 거리 19,200
- 프로시니엄 아치 고정볼 높이 8,000, 길이 14,000
- 후무대 고정볼 높이 7,500
- 후무대 조명볼 최대 높이 7,600 / 최소 높이 1,000
- 사이드 브릿지 최대 높이 4,800 / 최소 높이 1,000
- 음향부스 발코니 높이 2,400
- 발코니에서 메인 스피커까지 거리 12,000



아르코예술극장 대극장 SCALE: 1/75



2. Working Policy

• Work schedule

	A.M	Break time	P.M	Break time	Night	Deadline
Start	09:00	12:00	13:00	17:00	18:00	22:00
End	12:00	13:00	17:00	18:00	22:00	

※ In the case of dinner time, if there is a Night rental, consultation are available between 17:00~18:00 or 18:00~19:00

• Safety helmet

Sortation		Place	
		Auditorium	Stage
Set up		When you work on ceiling, 2 nd Floor, balcony : Must-wear	Must-wear
		When there's no console booth or top work : Don't wear	
Rehearsal	Upper part and fixing focusing	Don't wear	Must-wear
	Technical and Dress rehearsal	Don't wear	Don't wear
Show		Don't wear	Don't wear
Withdrawal		When you work on ceiling, 2 nd Floor, balcony : Must-wear	Must-wear
		When there's no console booth or top work : Don't wear	

• Type A ladder

- Common information

- A. Must sure to wear a safety helmet when working on ladders
- B. It can only be installed on a flat, sturdy, non-slip floor
- C. Must have to work in pairs

- The height that you can be able to work on (Based on the foothold with feet)

Height	Forbidden work
Less than that 1.2m~2m	Can't work on the top footstep
More than 2m less than 3.5m	Wearing harnesses, Can't work on the top and second top footstep
Excess 3.5m	Do not use

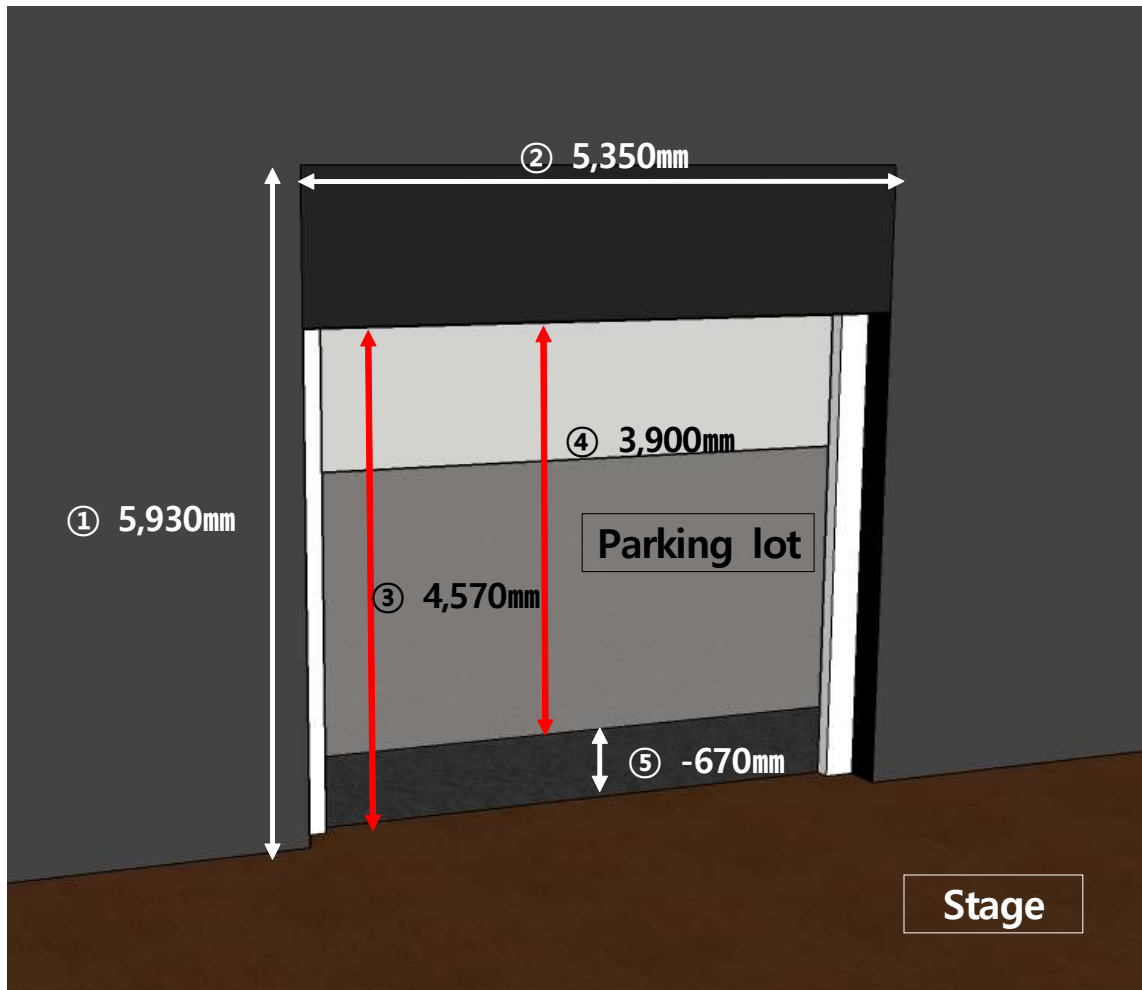
• Flame retardant finish

- After flame retardant finish, submit your test report (Within 2 years)
- Safety check at the site

• Special effects

- Decide after prior consultation with the theater

3. Loading Dock



- **Size**

- ① Height 5,930mm
- ② Width 5,350mm
- ③ Height from the stage floor to shutter 4,570mm
- ④ Height from the parking lot road to shutter 3,900mm
- ⑤ Height from the parking lot road to stage floor -670mm

- **The height of loading dock is -670mm based on the road**

3-2. Loading Dock Detail

Reference Picture

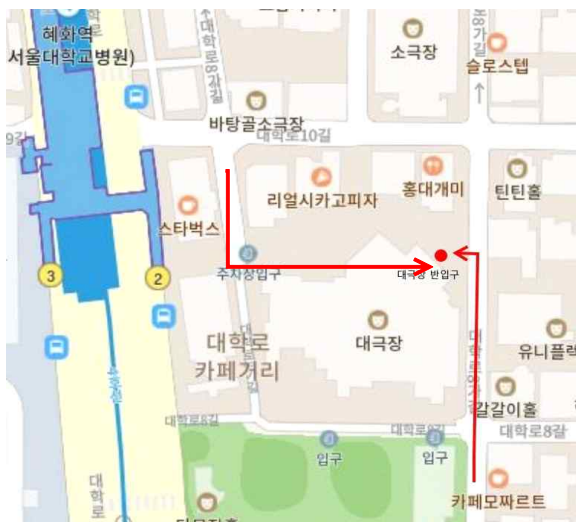


Main hall loading dock



It can be brought in using a roller lamp for bring in the stage (Maximum load 450kg)

- Location – ARKO Arts Theater parking lot





4. Over Stage (Fly Plot 1)

• Main Stage

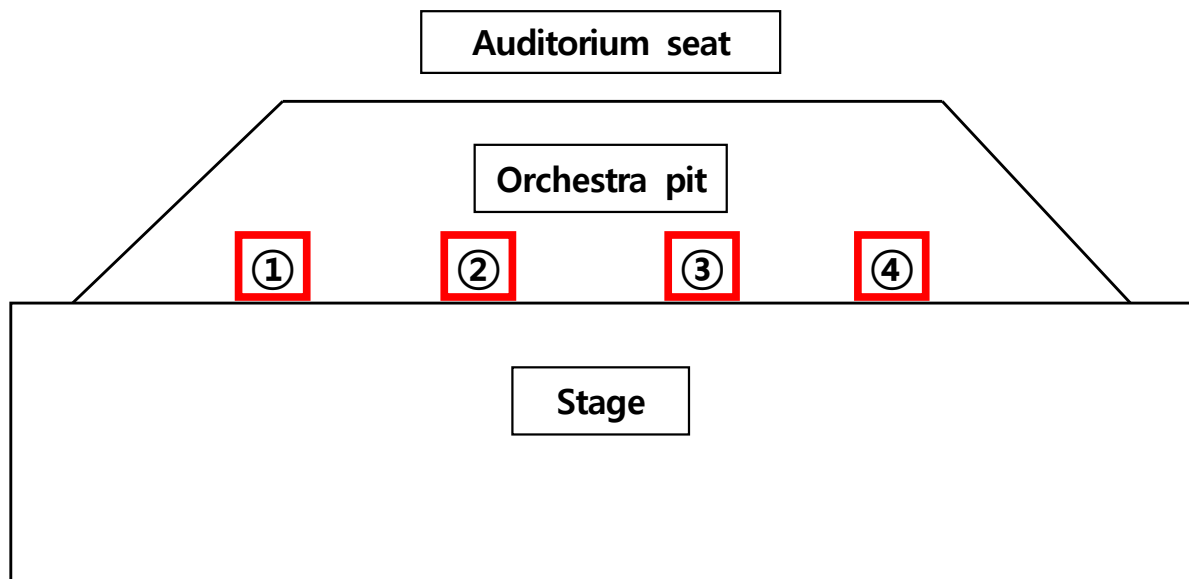
Name	Size (mm)	Load (kg)	Speed (m/min)	Note
POINT HOIST 1~4	-	155	-	
PROSCENIUM BRIDGE	14,400(W)×600(D)×400(H)	1,000	0-12	
MAIN CURTAIN	18,400(W)×10,000(H)	-	0-70	
SET BATTEN 1	18,400	500	0-50	
SET BATTEN 2	18,400	500	0-50	
SET BATTEN 3 (HEAD CURTAIN)	18,400 18,400(W)×4,500(H)	500	0-50	Head Curtain
LEG CURTAIN 1	18,400	300	13	4,000(W)×9,500(H)
SUS LIGHT 1	18,400(W)×600(D)×450(H)	1,000	0-12	
SET BATTEN 4	18,400	500	0-50	
SET BATTEN 5	18,400	500	0-50	
SET BATTEN 6	18,400	500	0-50	
SET BATTEN 7	18,400	500	0-50	
SET BATTEN 8 (HEAD CURTAIN)	18,400 18,400(W)×4,500(H)	500	0-50	Head Curtain
LEG CURTAIN 2	18,400	300	13	4,000(W)×9,500(H)
SUS LIGHT 2	18,400(W)×600(D)×450(H)	1,000	0-12	
SET BATTEN 9	18,400	500	0-50	
SET BATTEN 10	18,400	500	0-50	
SET BATTEN 11	18,400	500	0-50	
SET BATTEN 12	18,400	500	0-50	
SET BATTEN 13 (HEAD CURTAIN)	18,400 18,400(W)×4,500(H)	500	0-50	Head Curtain
LEG CURTAIN 3	18,400	300	13	4,000(W)×9,500(H)
SUS LIGHT 3	18,400(W)×600(D)×450(H)	1,000	0-12	
SET BATTEN 14	18,400	500	0-50	
SET BATTEN 15	18,400	500	0-50	
SET BATTEN 16	18,400	500	0-50	
SET BATTEN 17	18,400	500	0-50	
SET BATTEN 18	18,400	500	0-50	
SET BATTEN 19 (HEAD CURTAIN)	18,400 18,400(W)×4,500(H)	500	0-50	Head Curtain
LEG CURTAIN 4	18,400	300	13	4,000(W)×9,500(H)
SUS LIGHT 4	18,400(W)×600(D)×450(H)	1,000	0-12	
SET BATTEN 20	18,400	500	0-50	
SET BATTEN 21	18,400	500	0-50	
DRAW CURTAIN	19,000(W)×9,500(H)	500	13 (UP/DN) 0-30 (OP/CL)	
UPPER LIGHT	18,400	700	0-12	
SET BATTEN 22	18,400	500	0-50	UPPER Interferingism
SET BATTEN 23	18,400	500	0-50	
SET BATTEN 24	10,000	350	0-70	B CYC Interferingism
SET BATTEN 25	8,000	350	0-70	B CYC Interferingism
BLACK CYC	18,400(W)×9,200(H)	-	0-60	
REAR SCREEN	12,000(W)×8,000(H)	-	0-60	
SIDE BRIDGE		400	0-12	

4-2. Over Stage (Fly Plot 2)

- Rear Stage

Name	Size (mm)	Load (kg)	Speed (m/min)	Note
BACK STAGE LIGHT 1 (HEAD CURTAIN)	14,700 14,700(W)×900(H)	-	-	Head Curtain
BACK STAGE LIGHT 2	14,700	-	-	
BACK STAGE LIGHT 3	14,700	-	-	

- Point Hoist



4-3. Over Stage (Batten)

SET BATTEN



- Can control the location
 - SET BATTEN can control the driving speed
 - Max Driving speed 50m/min
 - #24, #25 max Driving speed 70m/min
- * BACK STAGE LIGHT #1~3 can't control the speed but can control the location

LEG CURTAIN BATTEN



- Can control the location
- Can't control the driving speed

SUS LIGHT



- Can control the location
- Can control the driving speed

SIDE LIGHT



- Can control the location
- Can control the driving speed

4-4. Over Stage (Curtain 1)

The following drop are allocated to the theater.

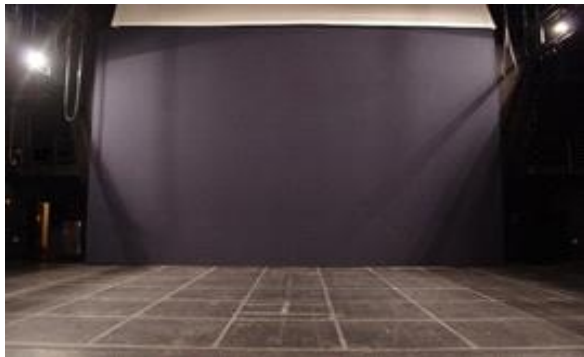
MAIN CURTAIN



DRAW CURTAIN



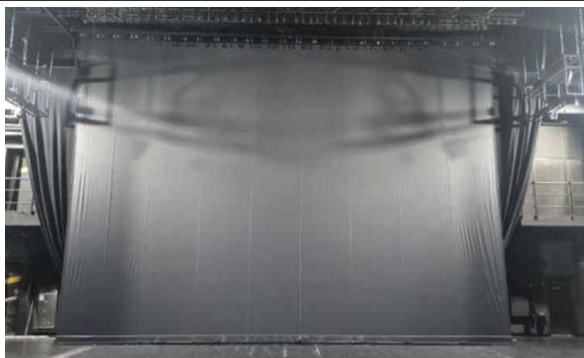
BLACK CYC



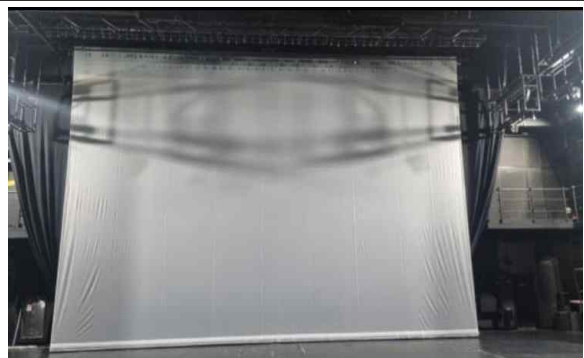
REAR SCREEN



BLACK SCREEN



WHITE SCREEN





BLACK TRANSPARENT DROP



WHITE TRANSPARENT DROP



4-5. Over Stage (Curtain 2)

HEAD CURTAIN					
	Size	18,400mm × 4,500mm			
	Quantity	4			
	Color	Black			
	Material	Wool Serge			
	Note	#3,8,13,19 Basic setting (Can change it.)			
LEG CURTAIN					
	Size	4,000mm × 9,500mm			
	Quantity	4 pair			
	Color	Black			
	Material	Wool Serge			
	Note	Location can be changed if necessary. Can't control the speed.			
OTHER CURTAIN					
HEAD CURTAIN 1	18,000mm x 4,500mm	storage	HEAD CURTAIN 2	17,700mm x 3,200mm	storage
HEAD CURTAIN 3	10,000mm x 3,200mm	storage	HEAD CURTAIN 4	14,700mm x 00mm	Back Stage light #1
LEG CURTAIN 1	4,400mm x 9,000 mm	storage	LEG CURTAIN 2	2,000mm x 4,800mm	storage
BLACK SCREEN	18,000mm x 9,000mm	#2	BLACK TRANSPARENT DROP	18,000mm x 9,000mm	storage
Drop	18,000mm * 9,000mm	#3	WHITE TRANSPARENT DROP	18,000mm x 9,000mm	storage

5. Floor Machinery

• Orchestra pit



- Size 13.85m(W) × 1.5m(D)
- Type Screw-Jack
- Travel -3,340mm
- Road 3,000kg
- Travel time It take 1minute and 30 seconds at the maximum speed

※ Can control the location and driving speed.

• Revolving Stage



- Size 12m
- Type Gear
- Speed 1rpm
Depending on the acceleration, there is a slight difference between the first and second rotational speeds.
- Road 5,000kg
- Range 360°



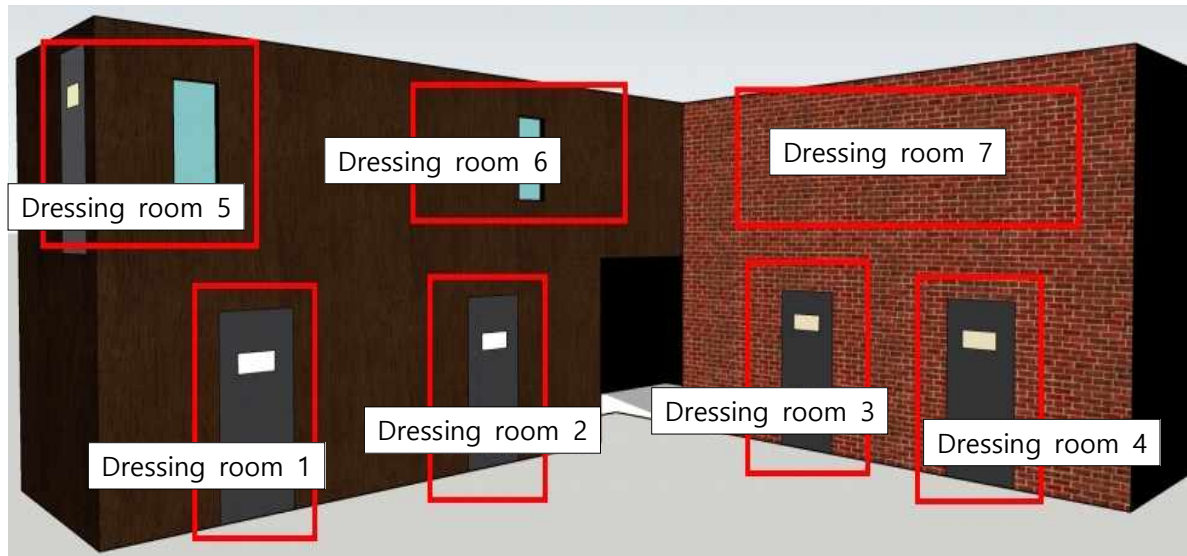
6. Platform

※ Only the quantity held in the theater should be used, but it can be moved **within ARKO Arts theater Main Hall and Small Hall** in consultation with the stage manager in charge.

Standard (size : cm)	Quantity
1×2 (30×60)	0
1×3 (30×90)	2
1×4 (30×120)	2
1×6 (30×180)	3
2×2 (60×60)	1
2×3 (60×90)	2
2×4 (60×120)	2
2×6 (60×180)	3
3×3 (90×90)	2
3×4 (90×120)	3
3×6 (90×180)	6
3×9 (90×270)	3
4×6 (120×180)	4
4×9 (120×270)	2
6×6 (180×180)	3
6×9 (180×270)	2
Apple box (30×45)	60
Stairway (90×90)	2
T = 15cm	

7. Dressing Room

• Location



※ Dressing room 5 : You can go up to the 2nd floor through the stairs to the left of Dressing room 1,

※ Dressing room 6, 7 : You can go up to the 2nd floor through the spiral stairs between Dressing room 2 and 3.

• Facility

Dressing room	location	Number of people used	Shower	Toilet	Note
1	1 st floor	10 people	X	X	Ondol-Heating floor
2	1 st floor	10 people	X	X	Ondol-Heating floor
3	1 st floor	5 people	O	O	
4	1 st floor	5 people	O	O	
5	2 nd floor	10 people	O	O	
6	2 nd floor	10 people	O	O	
7	2 nd floor	10 people	X	X	

7-2. Dressing Room Detail

Reference Picture



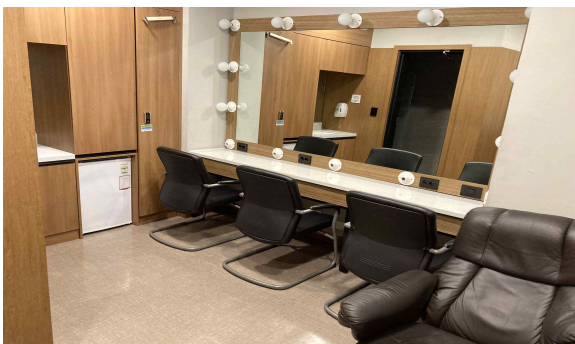
Dressing room 1



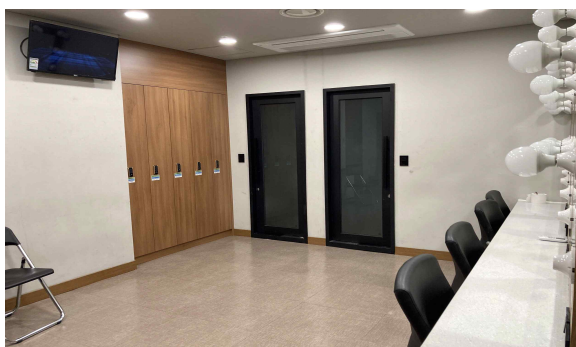
Dressing room 2



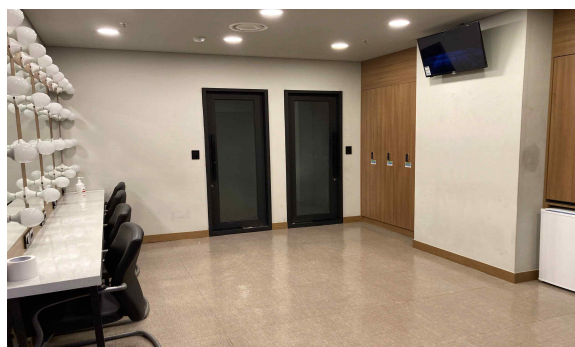
Dressing room 3



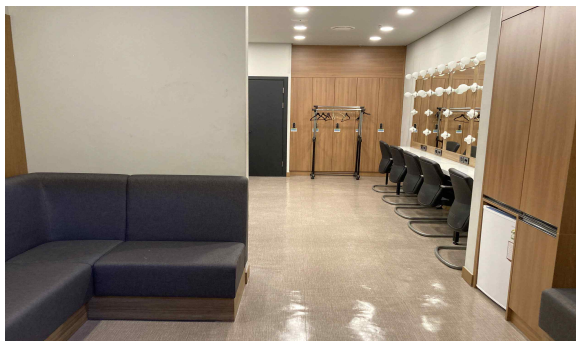
Dressing room 4



Dressing room 5



Dressing room 6



Dressing room 7